

**FACADE MATERIAL GENERAL NOTES:**

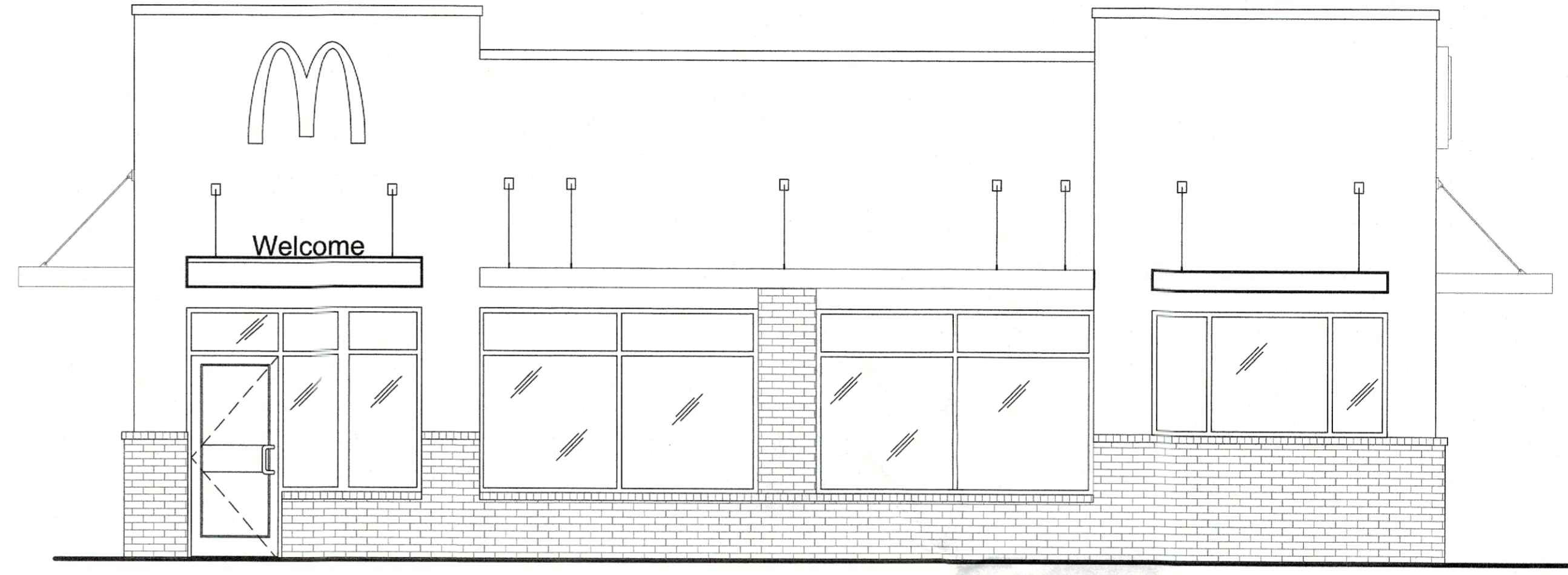
- BRICK WAINSCOT TO REMAIN, UNLESS NOTED OTHERWISE.
- FACADE MATERIAL TO REMAIN UNLESS NOTED OTHERWISE.
- STOREFRONT WINDOWS & DRIVE-THRU WINDOWS TO REMAIN, UNLESS NOTED OTHERWISE.
- EXISTING SIGNAGE TO REMAIN.
- ALL EXTERIOR CANOPIES AND TRELLISES TO REMAIN, PROTECT IN PLACE IN AREAS WHERE NEW CONSTRUCTION WILL OCCUR.

±19'-0" AFF.  
T.O. TOWER

±17'-6" AFF.  
T.O. PARAPET

±9'-4" AFF.  
B.O. CANOPY/TRELLIS

REF. 0'-0" AFF.  
FINISH FLOOR



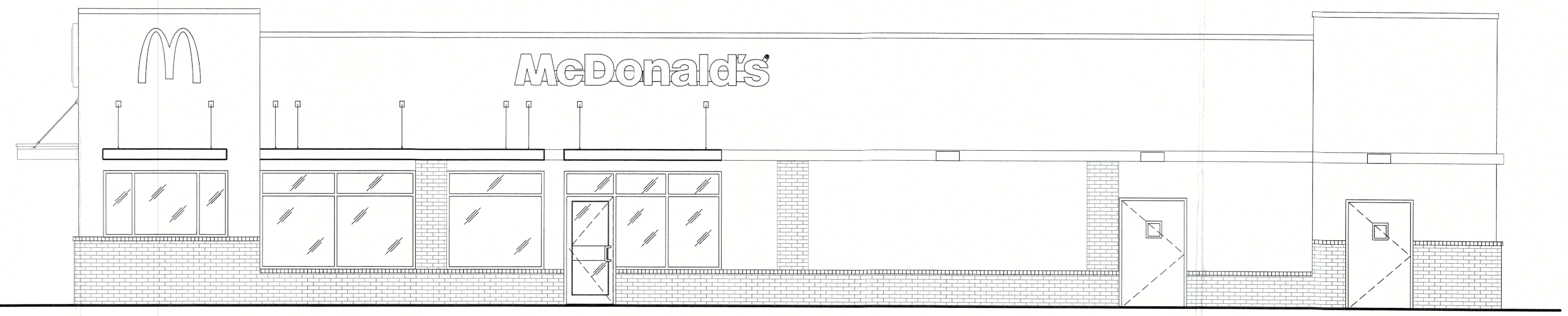
2 SOUTH ELEVATION  
A-20 SCALE: 1/4" = 1'-0"

±19'-0" AFF.  
T.O. TOWER

±17'-6" AFF.  
T.O. PARAPET

±9'-4" AFF.  
B.O. CANOPY/TRELLIS

REF. 0'-0" AFF.  
FINISH FLOOR



1 EAST ELEVATION (SIDE)  
A-20 SCALE: 1/4" = 1'-0"

**ALBERT TAUS & ASSOCIATES, ARCHITECTS**  
ALBERT TAUS, AIA, ARCHITECT  
ARCHITECTURE PLANNING INTERIOR DESIGN ENGINEERING  
1187 MOREFIELD ROAD PHILADELPHIA, PA 19115-2525  
PHONE: (215) 698-2516 FAX: (215) 698-7398  
atausarchitects.com



DATE	REVISION	NO.

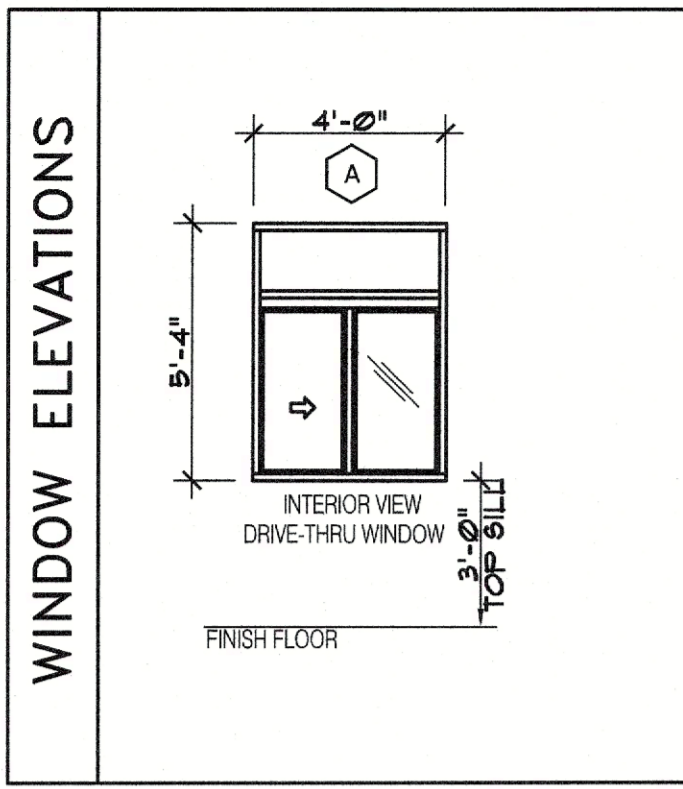
DOCUMENTS PREPARED FOR  
**McDONALD'S USA, LLC**  
LIBERTY FET - PHILADELPHIA REGION  
801 LAKEVIEW DRIVE SUITE 302  
BLUE BELL, PA 19422

THIS DRAWING IS THE PROPERTY OF ALBERT TAUS & ASSOCIATES, ARCHITECTS. IT IS TO BE USED ONLY FOR THE PROJECT AND SITE SPECIFICALLY IDENTIFIED HEREIN. IT IS NOT TO BE REPRODUCED OR TRANSMITTED IN ANY FORM OR BY ANY MEANS, ELECTRONIC OR MECHANICAL, INCLUDING PHOTOCOPYING, RECORDING, OR BY ANY INFORMATION STORAGE AND RETRIEVAL SYSTEM.

PROPOSED PROJECT  
**McDonald's USA, LLC**  
985 4-FULL FORWARD WINDOW  
301 BRUNSWICK CIRCLE EXTENSION  
LAURENCEVILLE, NJ 08848  
L/C 291262 NSN 27989

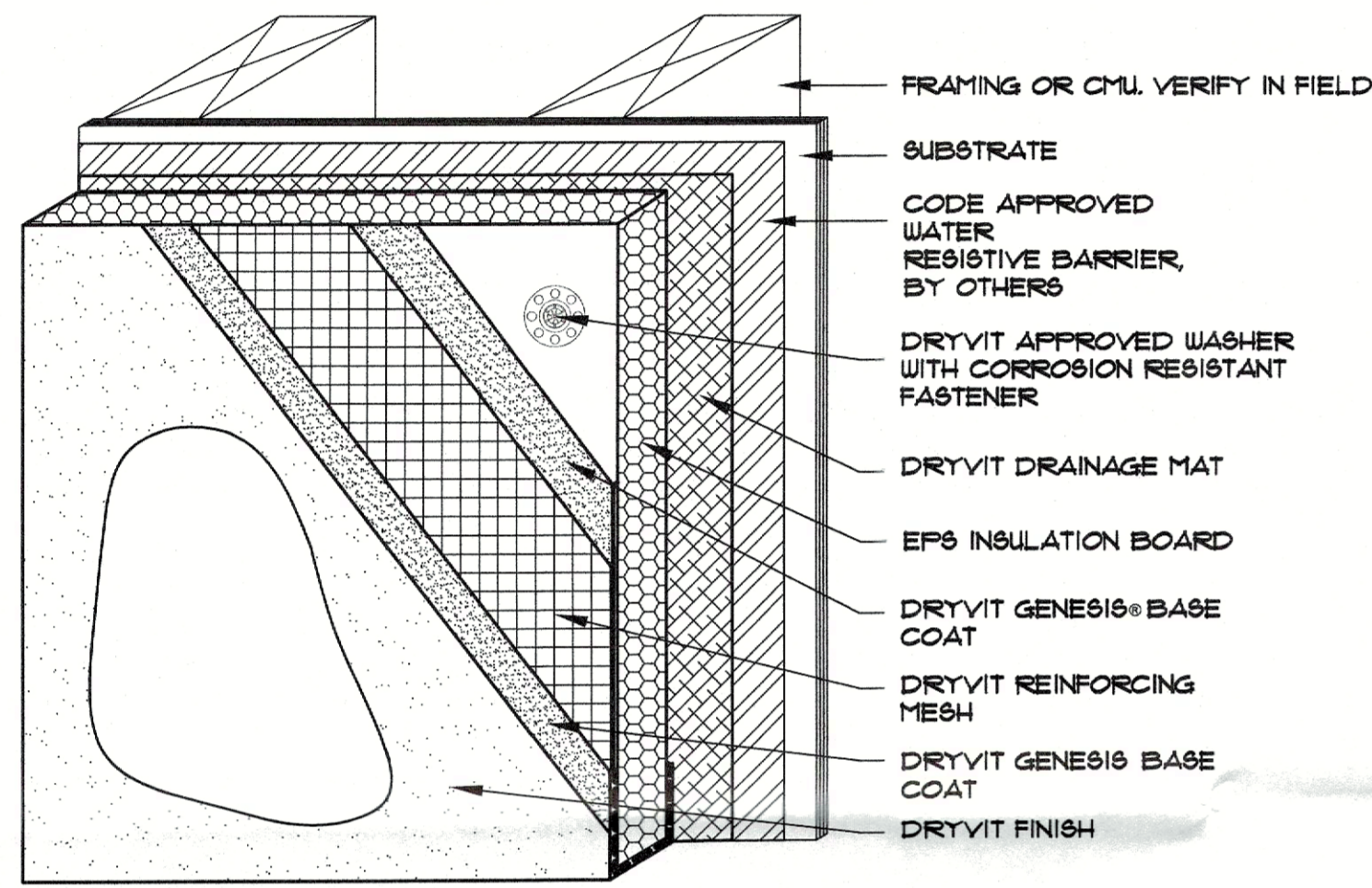
SHEET EXTERIOR ELEVATIONS  
JOB #: AT23061610  
SCALE: AS NOTED  
DRAWN BY: PM: DK  
DATE: 06/16/2023  
SHEET  
**A-2.0**



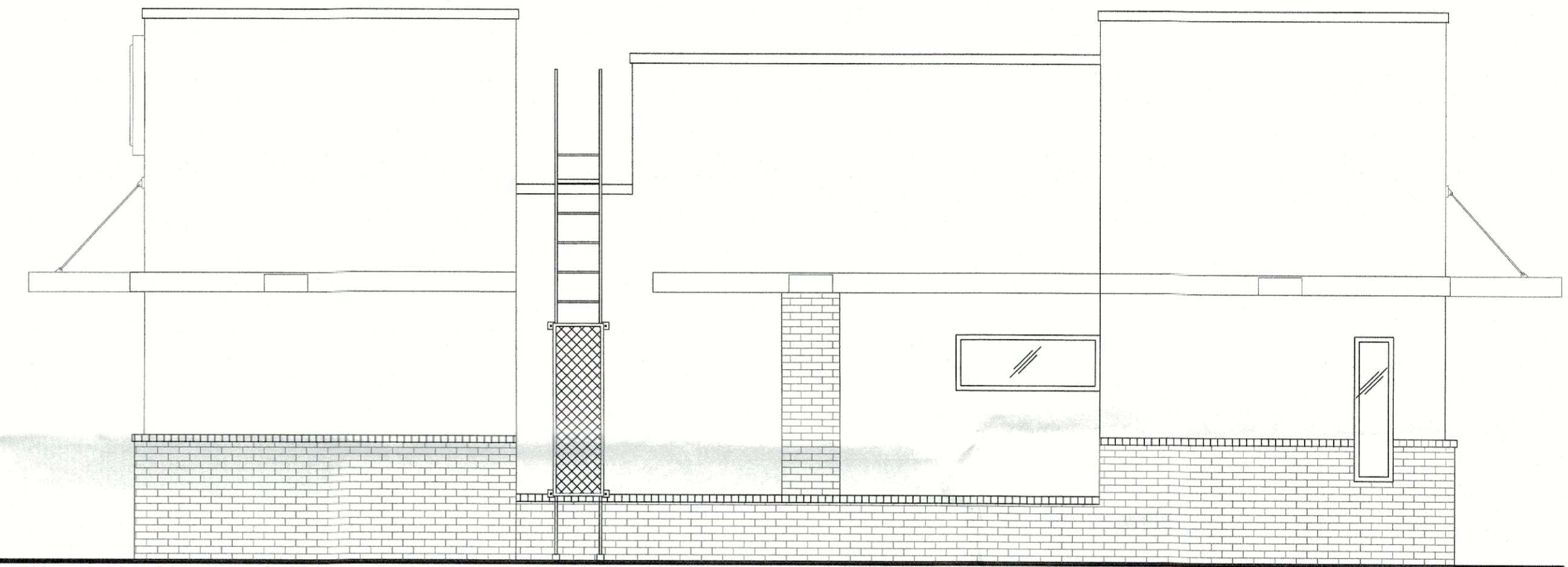
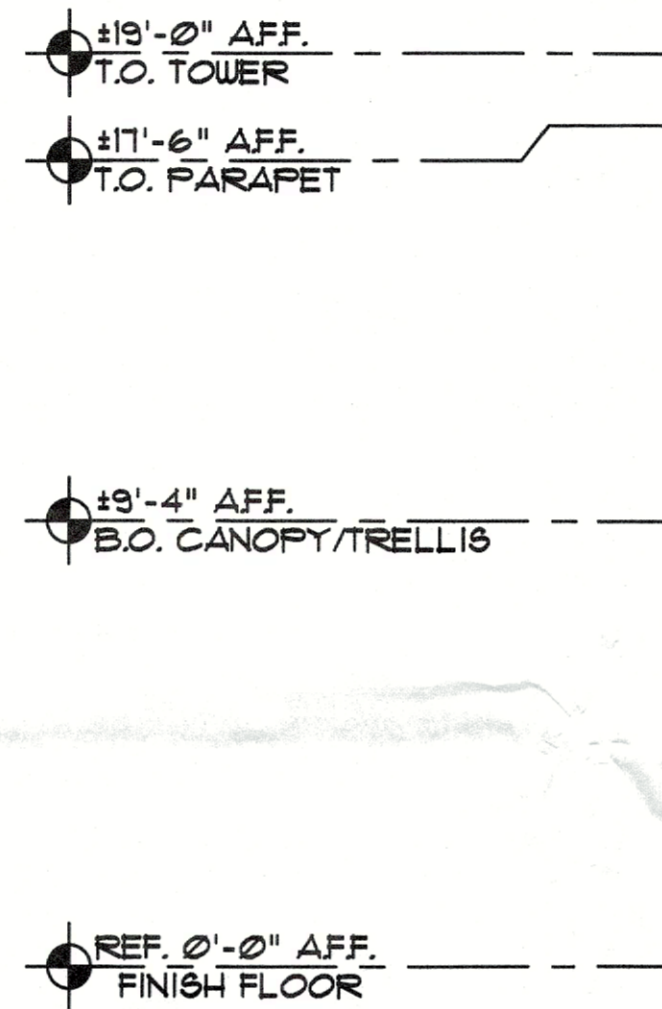


**FACADE MATERIAL GENERAL NOTES:**

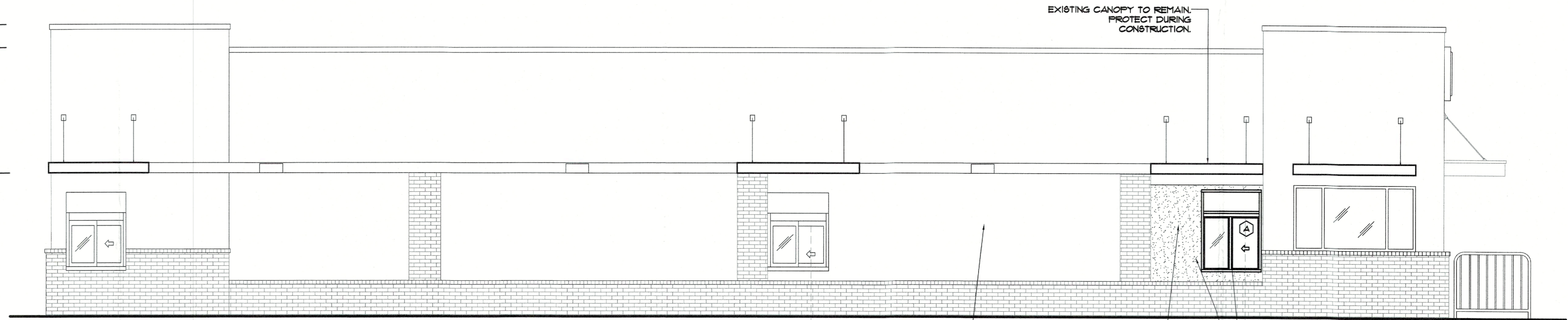
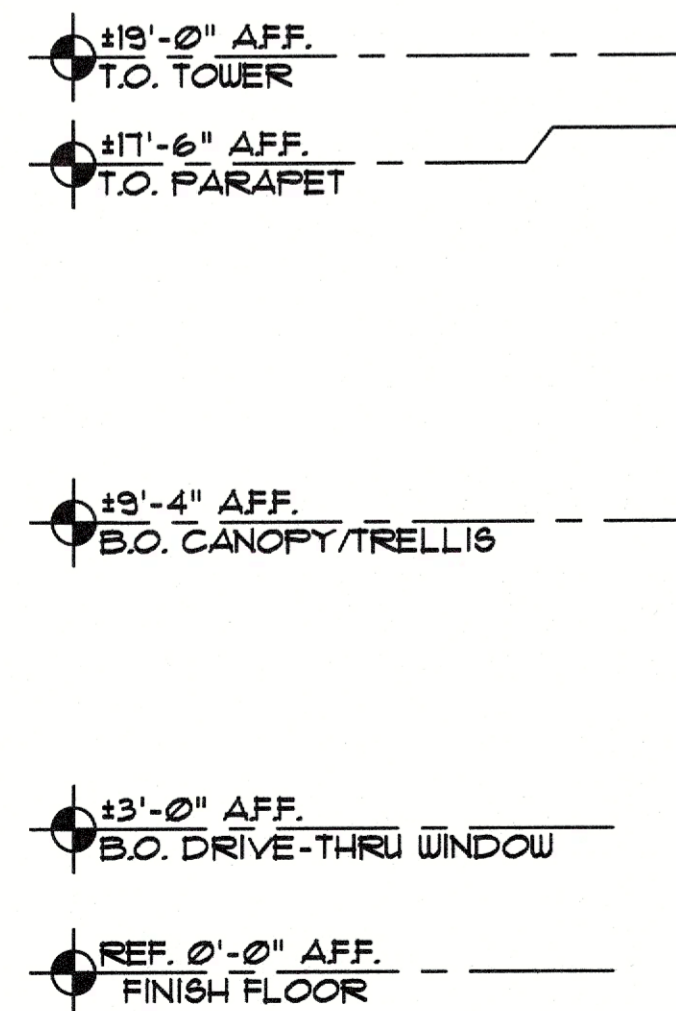
- BRICK WAINGCOT TO REMAIN, UNLESS NOTED OTHERWISE.
- FACADE MATERIAL TO REMAIN UNLESS NOTED OTHERWISE.
- STOREFRONT WINDOWS & DRIVE-THRU WINDOWS TO REMAIN, UNLESS NOTED OTHERWISE.
- EXISTING SIGNAGE TO REMAIN.
- ALL EXTERIOR CANOPIES AND TRELLISES TO REMAIN, PROTECT IN PLACE IN AREAS WHERE NEW CONSTRUCTION WILL OCCUR.



3 EIFS DETAIL (TYP)  
A2.1 SCALE: NTS



2 NORTH ELEVATION (REAR)  
A-2.1 SCALE: 1/4" = 1'-0"



EXISTING MATERIAL FACADE TO REMAIN, TYP ACROSS BUILDING, UNLESS NOTED OTHERWISE

GC TO INFILL PORTION OF BUILDING WITH NEW FRAMING AND EIFS FACADE. PAINT TO MATCH EXISTING FINISH. SEE DETAIL 3 ON THIS SHEET FOR MORE INFO.

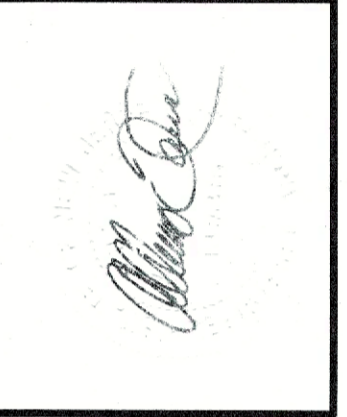
28'-6" DISTANCE FROM PICK-UP WINDOW TO FULL FORWARD WINDOW

PULL FORWARD WINDOW PER MCDONALD'S SPECIFICATION.

GC TO REMOVE EXISTING STOREFRONT WINDOW IN ITS ENTIRETY.

1 WEST ELEVATION (SIDE)  
A-2.1 SCALE: 1/4" = 1'-0"

**ALBERT TAUS & ASSOCIATES, ARCHITECTS**  
ALBERT TAUS, AIA, ARCHITECT  
ARCHITECTURE PLANNING INTERIORS DESIGN ENGINEERING  
1187 WOODFIELD ROAD PHILADELPHIA, PA 19115-3595  
PH: 215-698-2518 FAX: (215) 698-7388  
atausarchitects.com



NO.	REVISION	DATE

DOCUMENTS PREPARED FOR  
**MCDONALD'S USA, LLC**  
LIBERTY PET - PHILADELPHIA REGION  
801 LAKEVIEW DRIVE SUITE 302  
BLUE BELL, PA 19422

THIS DRAWING AND THE WORK HEREON ARE THE SOLE PROPERTY OF ALBERT TAUS, ARCHITECTS. NO PART OF THIS DRAWING OR WORK HEREON IS TO BE REPRODUCED OR TRANSMITTED IN ANY FORM OR BY ANY MEANS, ELECTRONIC OR MECHANICAL, INCLUDING PHOTOCOPYING, RECORDING, OR BY ANY INFORMATION STORAGE AND RETRIEVAL SYSTEM, WITHOUT PERMISSION IN WRITING BY ALBERT TAUS, ARCHITECTS.

PROPOSED PROJECT  
**McDonald's USA, LLC**  
959 4<sup>th</sup> FLOOR FORWARD WINDOW  
301 BRUNSWICK CIRCLE EXTENSION  
LAURENCEVILLE, NJ 08864-48  
L/C 291262 NSN 27989

SHEET EXTERIOR ELEVATION  
JOB #: AT23061610  
SCALE: AS NOTED  
DRAWN BY: JG PM: DK  
DATE: 06/16/2023  
SHEET  
**A-2.1**